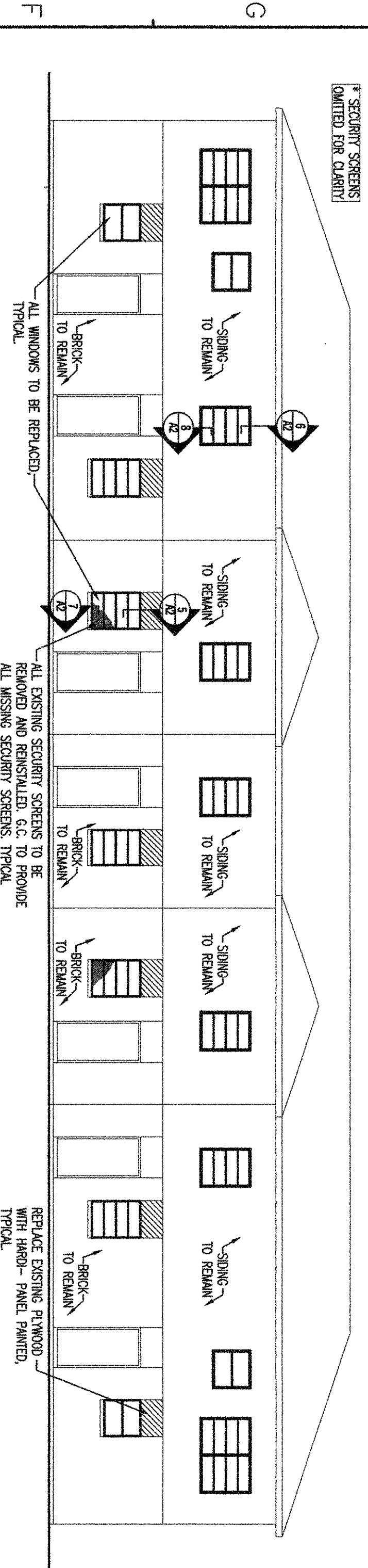
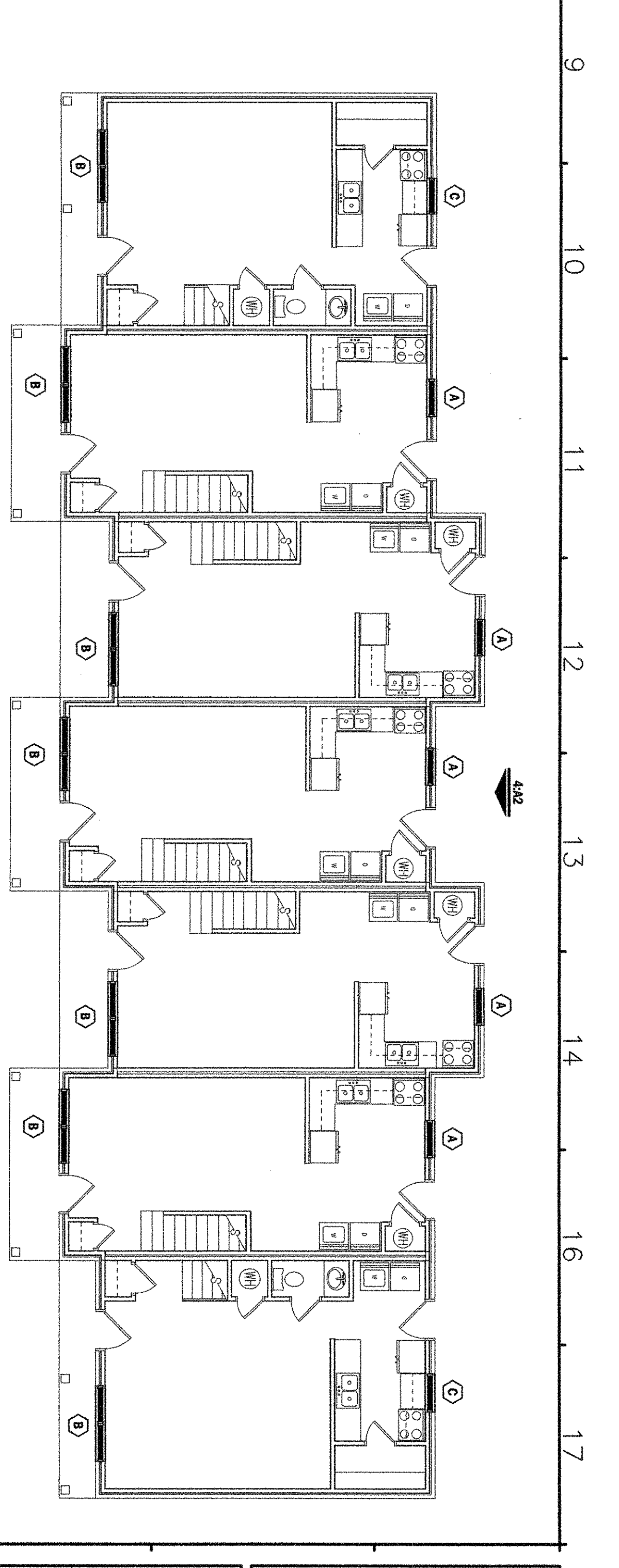


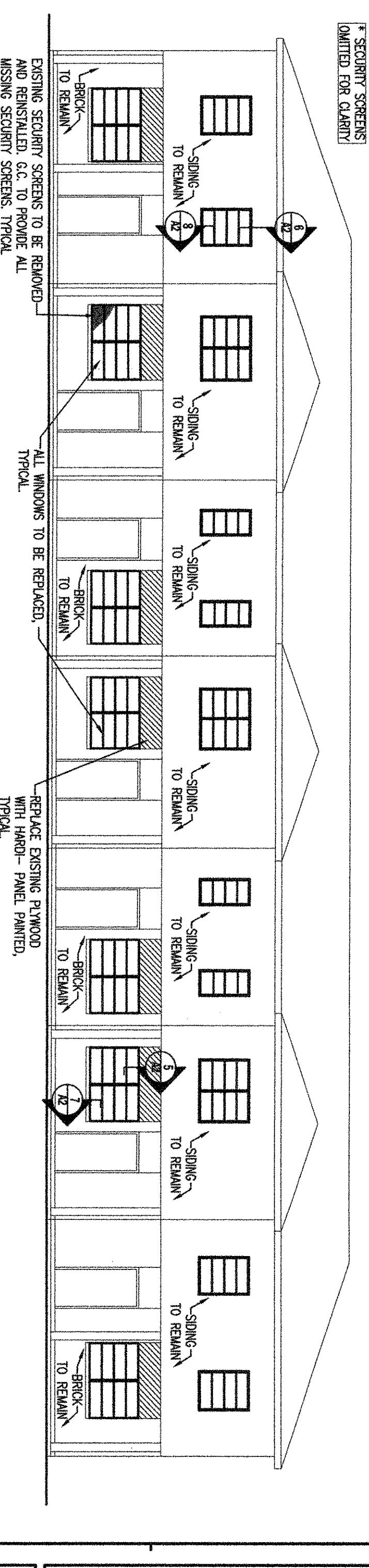
2 TYPE C BUILDING - SECOND FLOOR PLAN
1/8" = 1'-0"



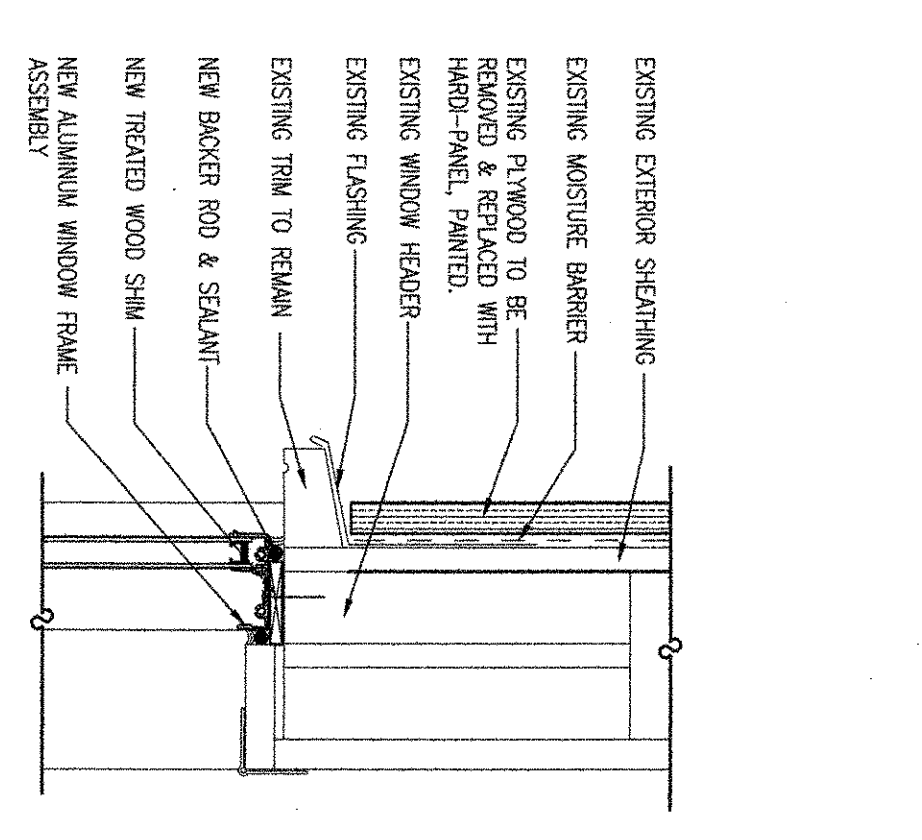
4 TYPE C BUILDING - REAR ELEVATION
1/8" = 1'-0"



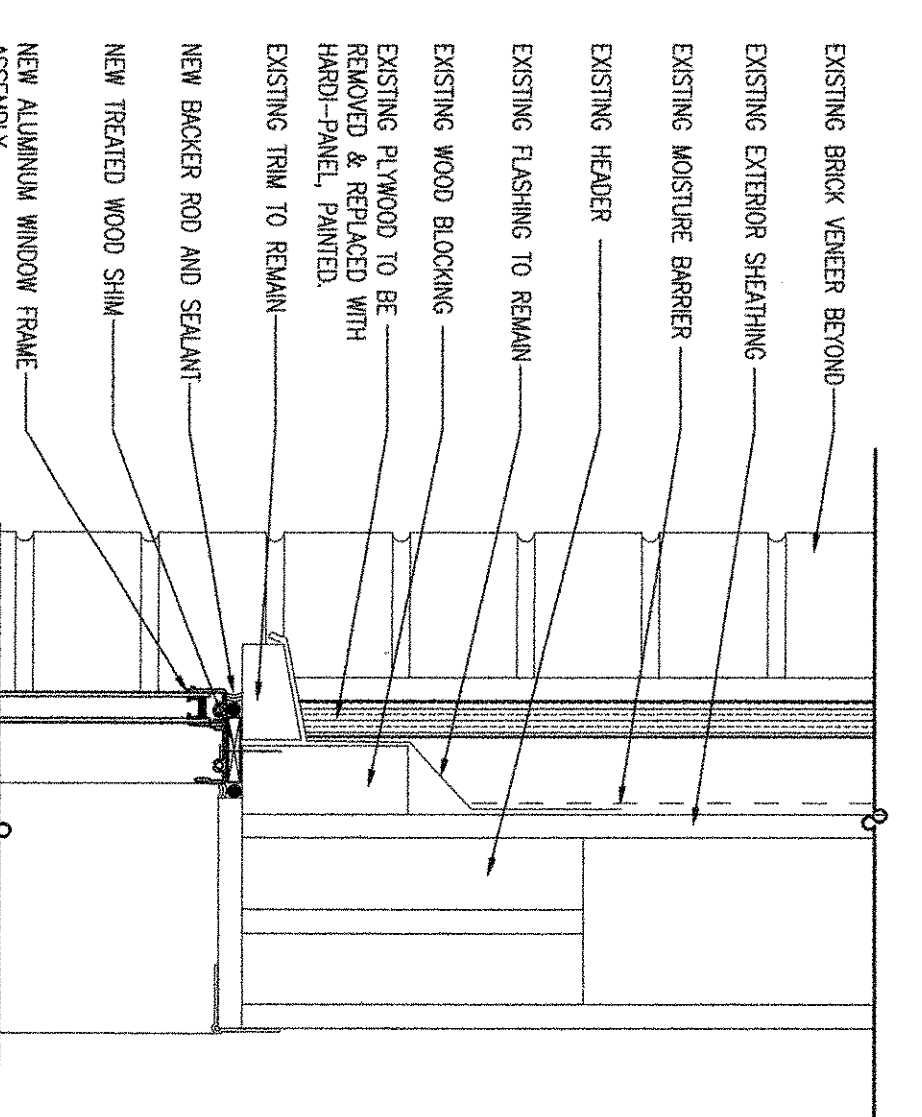
1 TYPE C BUILDING - FIRST FLOOR PLAN
1/8" = 1'-0"



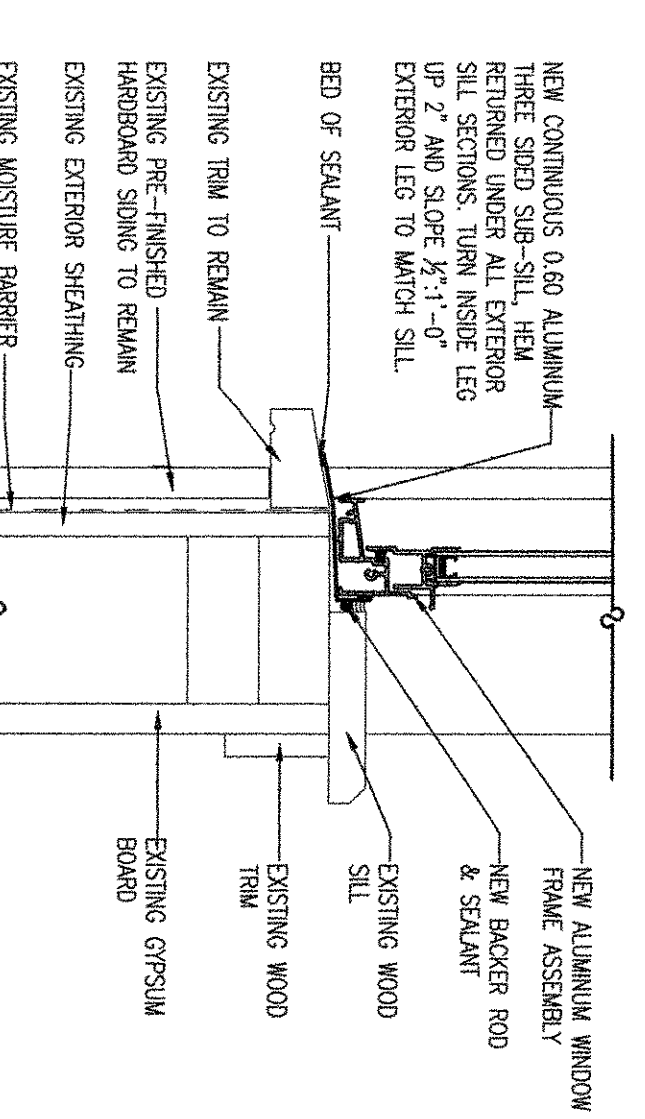
3 TYPE C BUILDING - FRONT ELEVATION
1/8" = 1'-0"



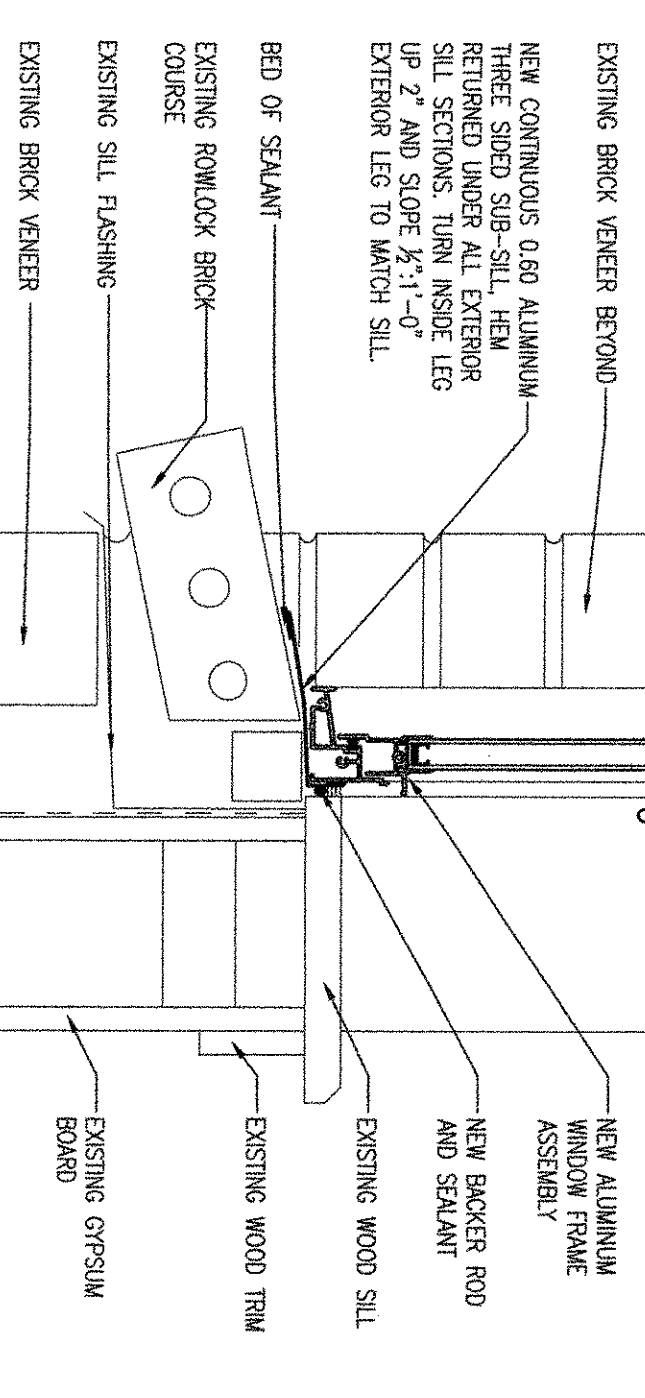
6 WINDOW HEAD DETAIL AT SIDING
3/4" = 1'-0"



5 WINDOW HEAD DETAIL - FIRST FLOOR TYPICAL
3/4" = 1'-0"



8 WINDOW SILL DETAIL AT SIDING
3/4" = 1'-0"



7 WINDOW SILL DETAIL AT BRICK
3/4" = 1'-0"

WINDOW REPLACEMENT - CLEMSON DRIVE & 27th STREET
HOUSING AUTHORITY OF CITY OF KENNER, LA
245 CLEMSON DRIVE & 331 27TH STREET
KENNER, LA 70065

Watts Didier Architects, LLC
Architects • Planners • Consultants
7464 Exchange Place, Suite 201 Baton Rouge, Louisiana 70806

DATE **MARCH 12, 2015**
REVISIONS

JOB NUMBER **15-101**
SHEET **A2**
SET NUMBER

